

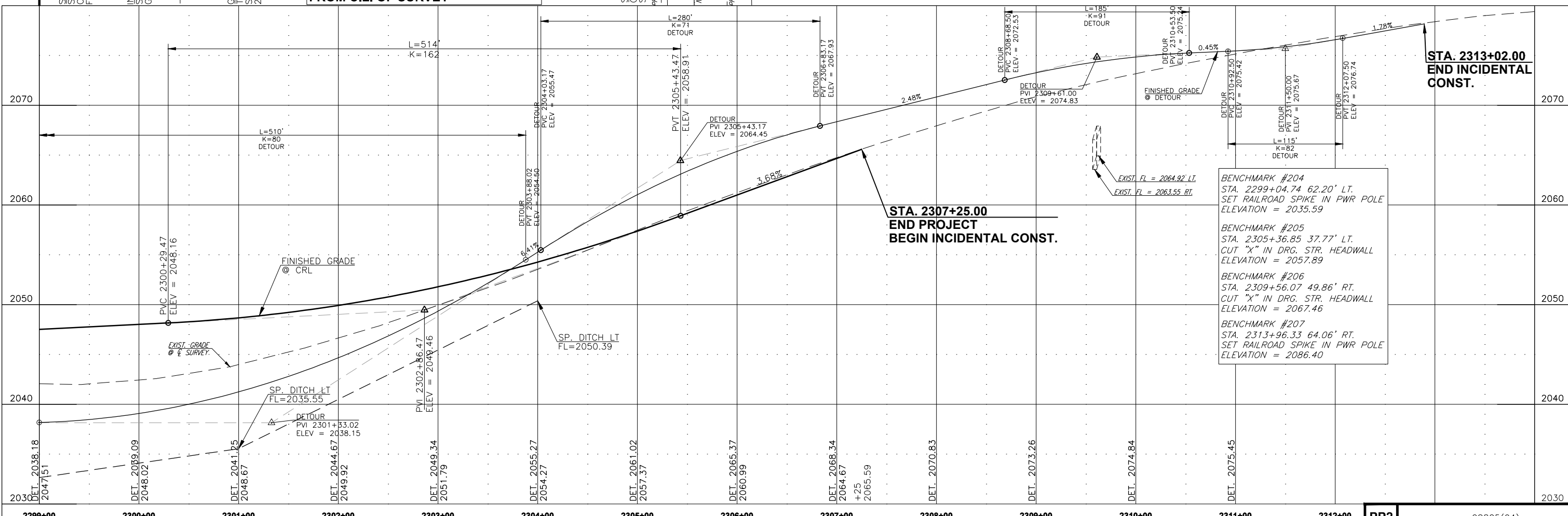
CURVE 3 DATA
 DETOUR
 P.I. STA. 2308+50.50
 N = 451404.2708
 E = 1576587.2904
 R = 1145.9126
 T = 125.498'
 Δ = 12°30'00"
 L = 250.00'
 D = 5°00'00"
 V = 45 MPH
 S = NO SUPER

CURVE 4 DATA
 DETOUR
 P.I. STA. 2312+16.96
 N = 451761.6467
 E = 1576672.7561
 R = 1145.000'
 T = 1128.601'
 Δ = 12°49'00"
 L = 256.128'
 D = 5°00'00"
 V = 45 MPH
 S = NO SUPER

NOTE: ALL DISTANCES SHOWN TO RIGHT OF WAY, FENCES, UTILITIES, AND OTHER EXISTING OBJECTS ARE FROM C.L. OF SURVEY

ALL EXISTING UTILITY LOCATIONS ARE APPROXIMATE & SHALL BE FIELD VERIFIED PRIOR TO CONSTRUCTION

SEE SHEET 6 FOR ALL DRAINAGE STRUCTURE INFORMATION



BENCHMARK #204
 STA. 2299+04.74 62.20' LT.
 SET RAILROAD SPIKE IN PWR POLE
 ELEVATION = 2035.59

BENCHMARK #205
 STA. 2305+36.85 37.77' LT.
 CUT "X" IN DRG. STR. HEADWALL
 ELEVATION = 2057.89

BENCHMARK #206
 STA. 2309+56.07 49.86' RT.
 CUT "X" IN DRG. STR. HEADWALL
 ELEVATION = 2067.46

BENCHMARK #207
 STA. 2313+96.33 64.06' RT.
 SET RAILROAD SPIKE IN PWR POLE
 ELEVATION = 2086.40